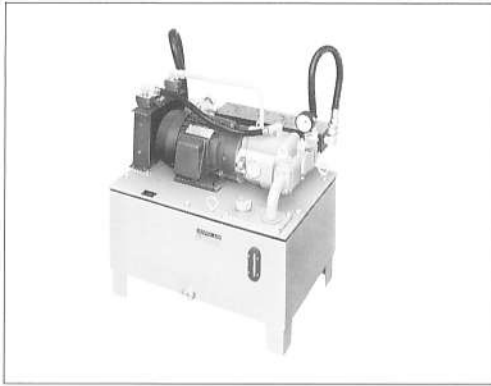


Pump units

TOYOPAC (Series TP ※ N)

The TOYOPAC series TP※N, completely rejuvenated, quiet hydraulic pump units equipped with low noise variable displacement piston pumps, are the ideal for improving your plant's or factory's working environment. Their small size makes the relevant machine compact and an abundance of optional equipments ensures a perfect selection to meet the needs of any task.



● Features

1. Low power consumption

The hydraulic unit mounted with the high-efficient variable displacement piston pump ensures less power loss as well as more economical operation because hydraulic fluid temperature rise is little even with a tank of small capacity.

2. Low noise

The low noise variable displacement piston pump ensures quiet operation of the entire mechanism.

3. Compact

The use of the TOYOPUMP method (direct connection of pump and motor) ensures the compactness of the entire unit.

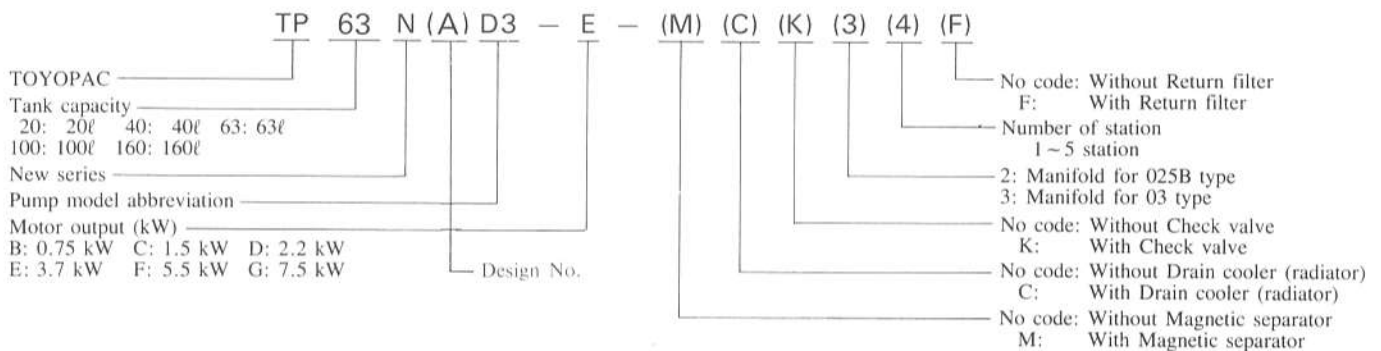
4. Quick delivery, low-cost

Mass production of these units makes possible quick and low-cost delivery.

5. A large variety of optional equipment

Optional items include magnetic separator, drain cooler (radiator), check valve, manifold and return filter. Please see the option list (101) for more information.

● Model coding



● Specifications

Model	Motor	Tank capacity ℓ	Delivery adjusting range		Max. operating pressure		Pressure adjusting range		Voltage	Weight*3 kg
			l/min *1 50Hz	gpm *2 60Hz	MPa	psi	MPa	psi		
TP20NA-B3-B	0.75 kW 4P	20	4~12 1~3.2	4~14 1~3.7	7	1,000	1~7	143~1,000	AC200V 50/60Hz AC220V 60Hz	50
TP20NA-B3-C	1.5 kW 4P									60
TP20NA-B5-C			60							
TP20NA-C3-C	1.5 kW 4P	40		5~21 1.3~5.6	5~26 1.3~6.9	7	1,000	1~7		143~1,000
TP40NA-C3-D			2.2 kW 4P							
TP40NA-C5-C	1.5 kW 4P	80								
TP40NA-C5-D			2.2 kW 4P	90						
TP63NA-C3-C	1.5 kW 4P	63			5~21 1.3~5.6	5~26 1.3~6.9	7	1,000		1~7
TP63NA-C3-D			2.2 kW 4P	105						
TP63NA-C3-E	3.7 kW 4P	105								
TP63NA-C5-D			2.2 kW 4P	95						
TP63NA-C5-E	3.7 kW 4P	105								
TP63NA-D3-D			2.2 kW 4P	12~47 3.2~12.5	12~56 3.2~14.8	7	1,000	1~7	143~1,000	115
TP63NA-D3-E	3.7 kW 4P	115								
TP100N-C5-F			5.5 kW 4P	100	5~21 1.5~9.6	5~24 1.5~6.4	14	2,000	3~14	500~2,000
TP100N-D3-E	3.7 kW 4P	145								
TP100N-D3-F			5.5 kW 4P	165						
TP100N-D5-F	5.5 kW 4P	165								
TP160N-D3-F			5.5 kW 4P	160	12~47 3.2~12.5	12~56 3.2~14.8	7	1,000	1~7	143~1,000
TP160N-D3-G	7.5 kW 4P	190								
TP160N-D5-F			5.5 kW 4P	180						
TP160N-D5-G	7.5 kW 4P	190								

Note: *1 the valve at the speed of 1,500 min⁻¹

*2 the valve at the speed of 1,500 min⁻¹

*3 the weight of oil excluded.

● Options

The TOYOPAC series TP#N comes with a large variety of options for every type of application. Choose those most suitable for your operation.

● M: Magnetic separator

Mounted underneath the hydraulic tank, the magnetic separator attracts and traps metal shavings and fillings in the hydraulic fluid to reduce operational friction and wear.

● C: Drain cooler (radiator)

The cooler is made for use in case operation temperature exceeds 60°C. As this is merely a drain cooler, it requires no power. The necessity for use of the drain cooler may be ascertained by referring to the hydraulic fluid temperature rise chart found with the basic unit exterior appearance drawings.

● K: Check valve

A check valve may be installed to avoid reverse rotation of the pump (cracking pressure: 0.005 MPa [0.72 psi])

● 2 : Manifold for 025B type

● 3 : Manifold for 03 type

Note: 1. The 1.2 liter tank may only be used with the 025B type manifold.

2. The manifold model for 025B type is HMD-#-025-03T2, and for 03 type HMD-#-03-04T2.

● F: Return filter

A return filter contributes to the long life of the unit by preventing damage due to contaminant in the hydraulic fluid (filtration capacity 10 μm paper element, visual indicator)

● Handling cautions

■ The pump

- Direction of pump rotation is clockwise as viewed from the end of the pump shaft.
- Before starting the pump, add hydraulic fluid through the inlet till the fluid is fully circulated inside the pump.

■ Maintenance

- Please utilize this equipment at the temperatures between 5 and 65°C.
- Hydraulic fluid of grades ISOVG32 or ISOVG46 or its equivalent should be used for this equipment. Flame retardant (water glycol, W/O emulsion and phosphoric ester types) hydraulic fluid cannot be used.
- This pump does not apply fire fighting applications.
- Cleaning the tank of the TO20N, 40N and 63N is accomplished by raising the tank cover. The TP100N and 160N models are cleaned from the cleaning window.

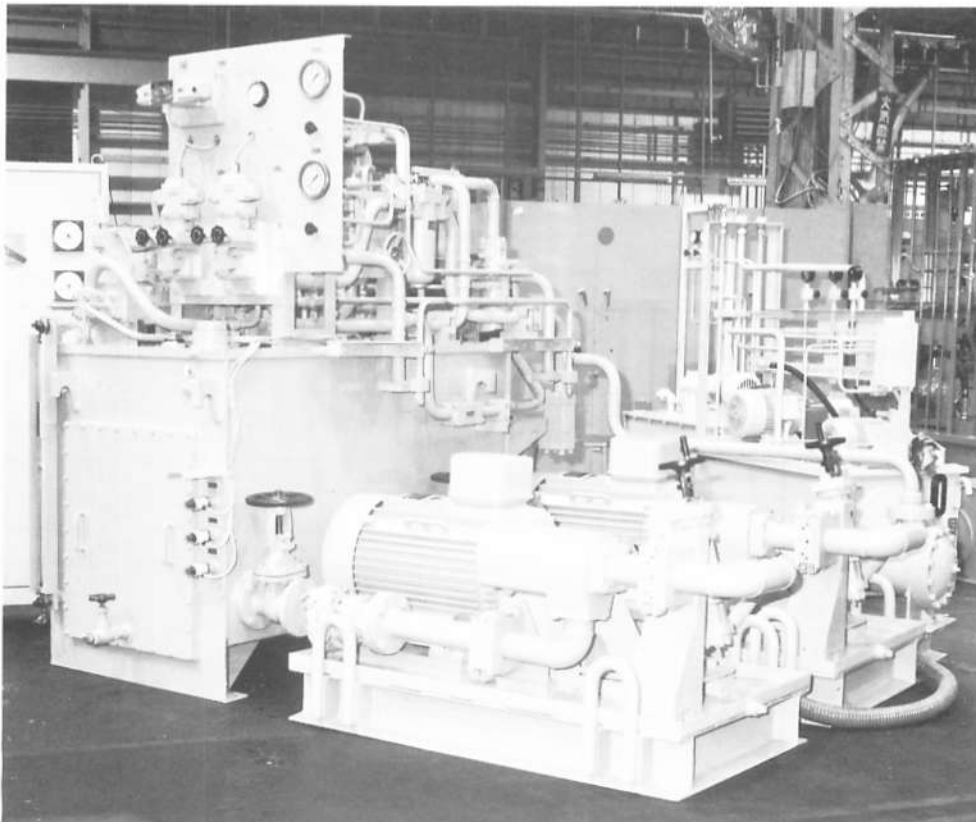
■ Options

- The only manifold size that may be mounted to the TP20N is the 025 type.
- The basic model is equipped with holes for the mounting of a manifold (manifold installation requires stays).
- When a check valve is placed on the pump discharge side, please use one with a cracking pressure of 0.005MPa [0.72 psi] (HK3-EFT-005-03 through 06).

■ Other cautions

- Exterior painting is done with Munsel no. 10.0B7.5/1.5. The pump, electric motor, hydraulic oil gauge, pressure meter and hydraulic fluid tank inlet cap/air breather are painted in the standard colors of their manufacturers.

Custom made power units



This Power unit for tester