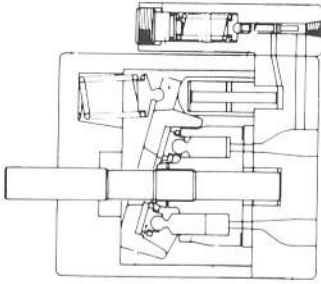


Piston pumps

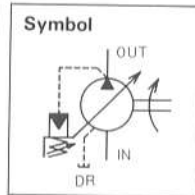
This variable displacement pump consists of a reciprocating piston or plunger with a swash plate, cam or crank.



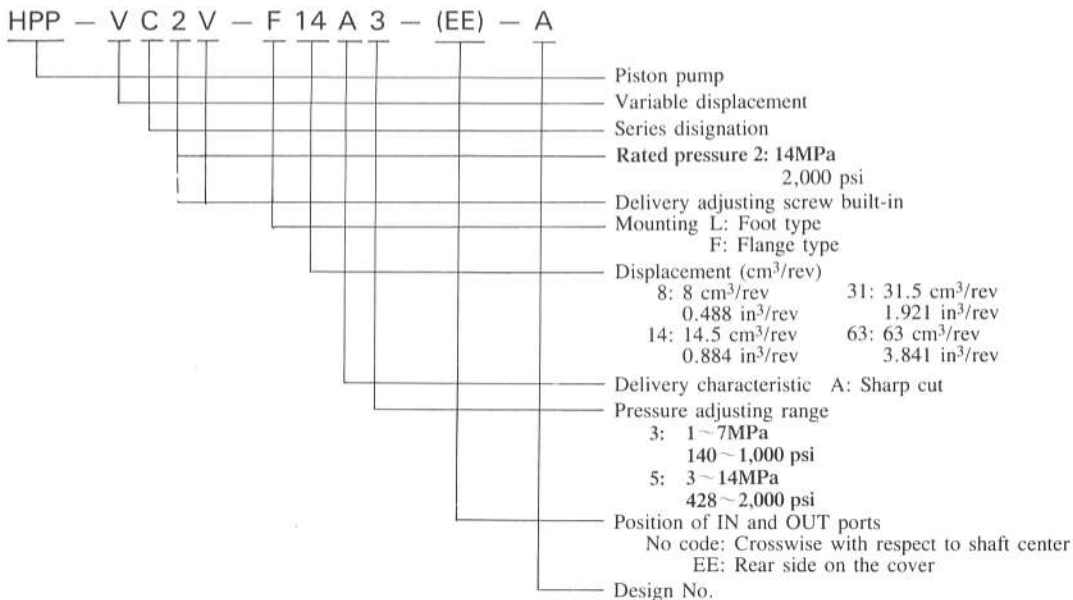
● Features

- Swash plate type variable displacement piston pump features low noise, high efficiency and high responsiveness.
 - Delivery rate, pressure adjusting range and piping direction can be fixed on request. Outstandingly durable piston pump.
- HPP-VB2V** : Min.delivery flow should be set at 4L/min.or more irrespective of rotation speed.
 - HPP-VC2V** : Min. delivery flow should be set at 5L/min.or more irrespective of rotation speed.
 - HPP-VD2V** : Min.delivery flow should be set at 12L/min. or more irrespective of rotation speed.
 - HPP-VF2V** : Min.Delivery flow should be set at 23L/min.or more irrespective of rotation speed.

Series HPP-V※2V



● Model coding



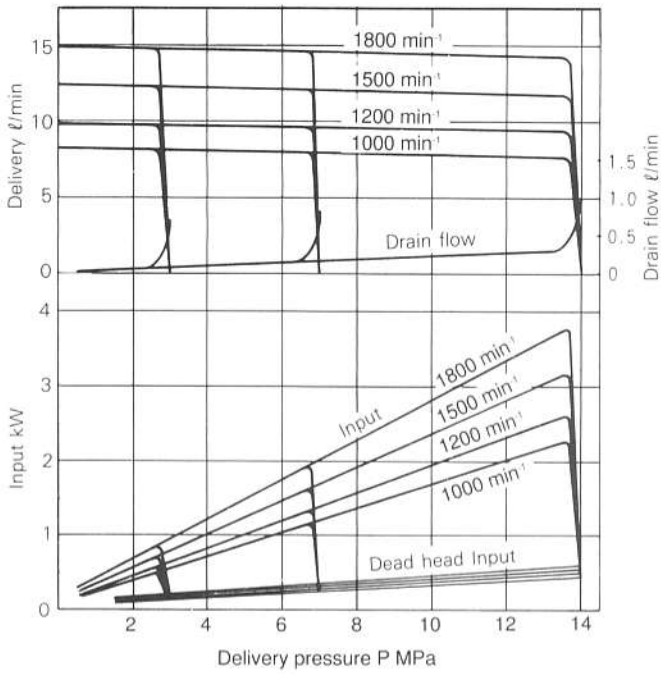
● Specifications

Model coding		Rated pressure		Displacement		Pressure adjusting range		Speed min ⁻¹		
Foot type	Flange type	MPa	psi	cm ³ /rev	in ³ /rev	MPa	psi	Max.	Rated	Min.
HPP-VB2V-L 8A3(-EE)	HPP-VB2V-F 8A3(-EE)	14	2,000	(2.4)~8	(0.146)~0.488	1~7	143~1,000	2,500	1,800	500
HPP-VB2V-L 8A5(-EE)	HPP-VB2V-F 8A5(-EE)					3~14	428~2,000			
HPP-VC2V-L14A3(-EE)-A	HPP-VC2V-F14A3(-EE)-A	14	2,000	(2.7)~14.5	(0.165)~0.884	1~7	143~1,000	3,000	1,800	500
HPP-VC2V-L14A5(-EE)-A	HPP-VC2V-F14A5(-EE)-A					3~14	428~2,000			
HPP-VD2V-L31A3(-EE)-A	HPP-VD2V-F31A3(-EE)-A	14	2,000	(6.3)~31.5	(0.384)~1.92	1~7	143~1,000	2,500	1,800	500
HPP-VD2V-L31A5(-EE)-A	HPP-VD2V-F31A5(-EE)-A					3~14	428~2,000			
HPP-VE2V-L63A3(-EE)-A	HPP-VE2V-F63A3(-EE)-A	7	1,000	(12.6)~63	(0.768)~3.84	1.4~7	143~1,000	2,000	1,800	600

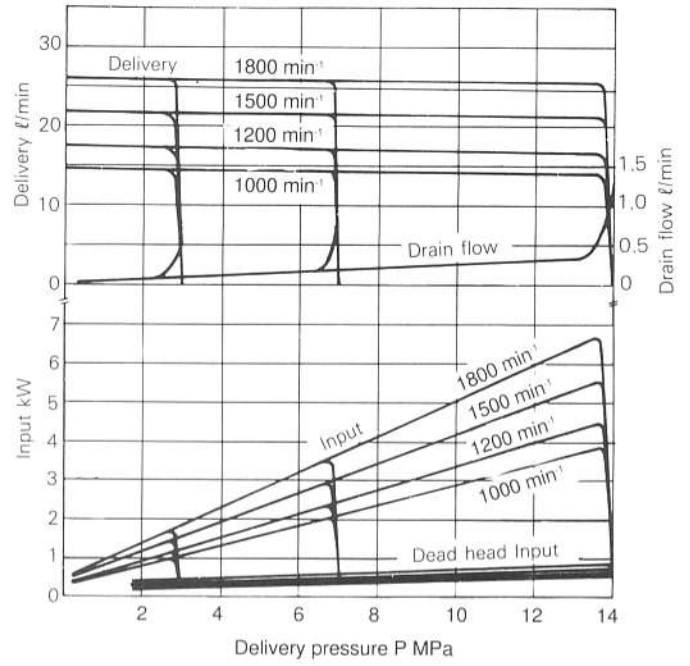
Piping flanges should be separately ordered.

Performance characteristics

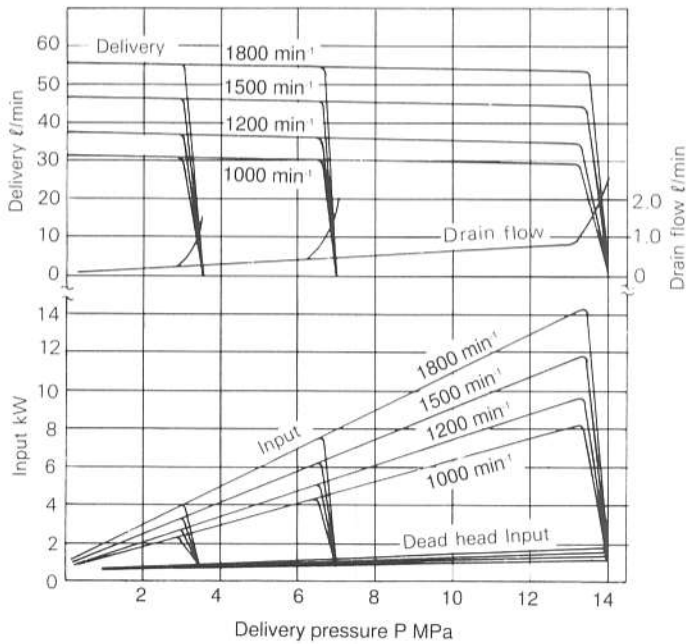
When viscosity of hydraulic oil is 20 min²/s.



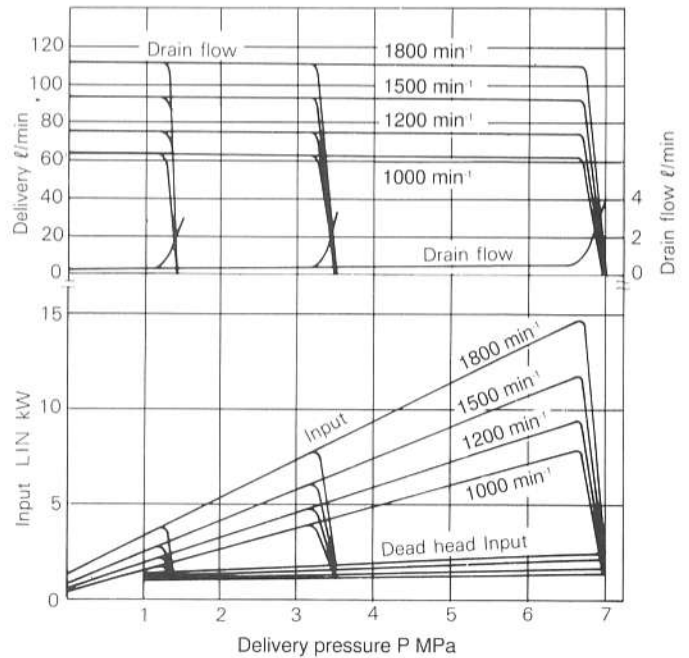
HVP-VB2V-#8A*



HVP-VC2V-#14A*



HVP-VD2V-#31A*



HVP-VF2V-#63A*

• Piping flanges

Please select from the table below and separately.

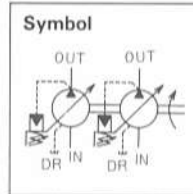
Model		HPP-VB2V	HPP-VC2V	HPP-VD2V	HPP-VF2V
Configuration	Threaded type	FHPP-04PT	FHPP-06PT	FHPP-10PT	FHPP-12PT
	Welded type	FHPP-04WE	FHPP-06WE	FHPP-10WE	FHPP-12WE

Series HPP-VC*2V

Two variable displacement piston pumps (models HPP-VC2V-F14A, HPP-VF2V-F63A3) assembled in tandem, driven by one motor, deliver fluid to two separate circuits to operate two different actuators, or combined to one circuit to operate one same actuator.



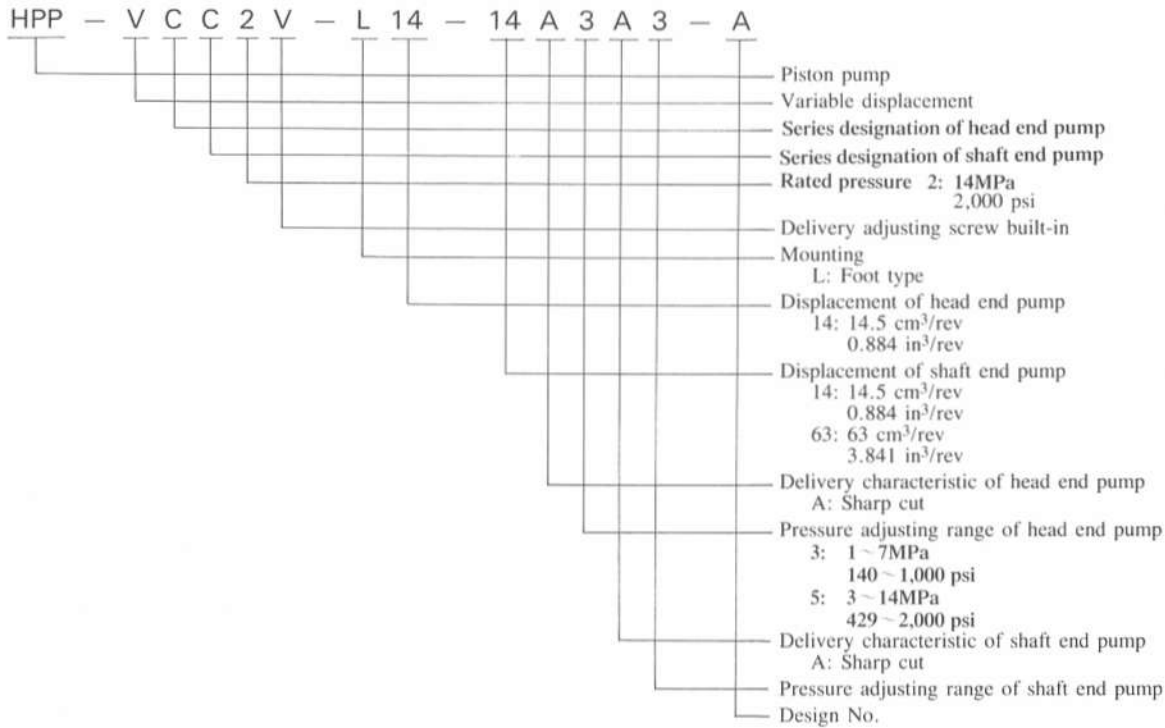
HPP-VCC2V-L14-14A3A3



● Features

- Two piston pumps are driven by one shaft, (resulting in reducing its mounting space.)
- Direction of rotation is clockwise when viewed from the shaft end.
- For the performance curves, please refer to the relevant single piston pump.
- HPP-VC2V : Min.delivery flow should be set at 5L/min.or more irrespective of rotation speed.
- HPP-VF2V : Min.delivery flow should be set at 23L/min.or more irrespective of rotation speed.

● Model coding



● Specifications

Model	Rated pressure		Displacement				Pressure adjusting range				Speed min ⁻¹		
	MPa	psi	cm ³ /rev		in ³ /rev		MPa		psi		Max.	Rated	Min.
HPP-VCC2V-L14-14A3A3	7	1,000	(2.7)	14.5	(0.165)	0.884	1	7	143	1,000	1,800	1,800	500
	7	1,000	(2.7) ~	14.5	(0.165) ~	0.884	1	7	143	~ 1,000			720
HPP-VCF2V-L14-63A3A3	7	1,000	(2.7)	14.5	(0.165)	0.884	14	7	200	~ 1,000			720
HPP-VCF2V-L14-63A5A3	14	1,000	(12.6)	63	(0.768)	3.84	3	14	428	2,000	720		
	7	1,000					14	7	200	~ 1,000			

- (Note) 1. As for the rated pressure, displacement and pressure adjusting range, the values in the upper side are for the head end pump and the values in the lower side for the shaft end pump.
 2. For the specifications, please refer to the single piston pump.
 3. Piping flanges should be separately ordered.