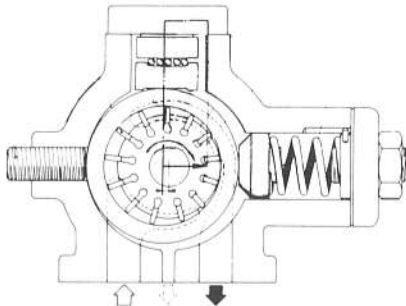


Variable displacement vane pumps

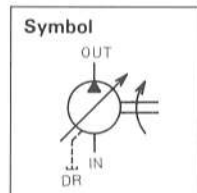
As the rotor with free vane plates rotates, this pump forms the chamber for transport of fluid oil enclosed by vane plates, a rotor and an eccentric cam ring with a rotor. With the chamber getting smaller, it delivers fluid oil to OUT port for pumping operation, changing its pressure and flow according to the load.



● Features

1. This pump supplies pressure and flow corresponding to load to save power, resulting in reducing the increase of fluid temperature.
2. Pressure control valves are not necessary due to its built-in pressure compensation mechanism.

Series HVP-V ※ 1



- Direction of rotation is clockwise viewed from the shaft end.

● Model coding

HVP - V D 1 - G 45 A 2 - B

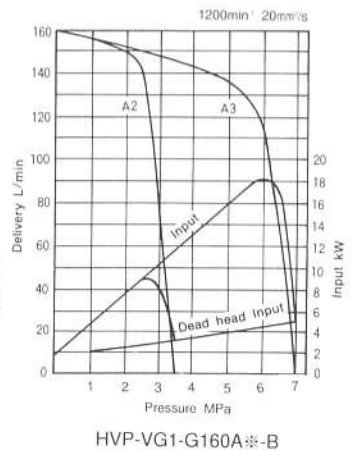
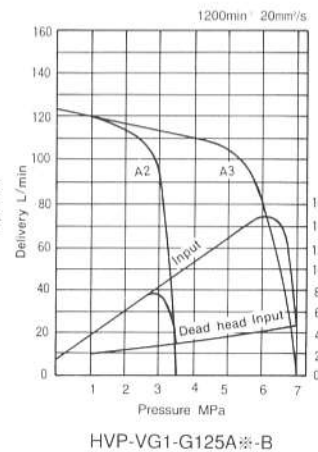
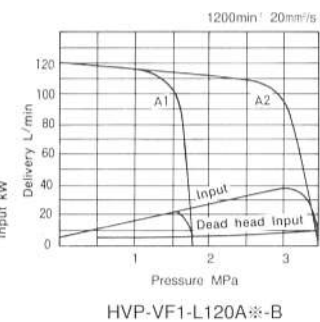
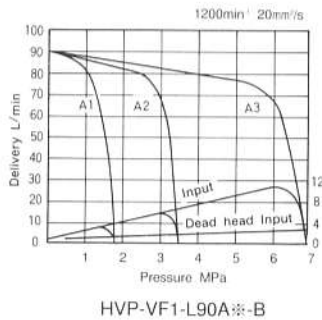
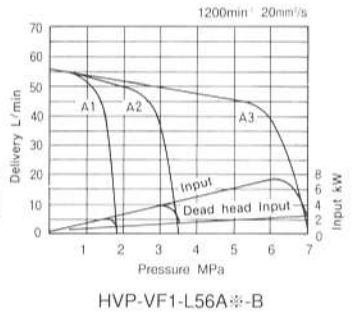
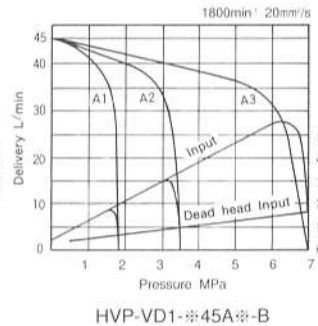
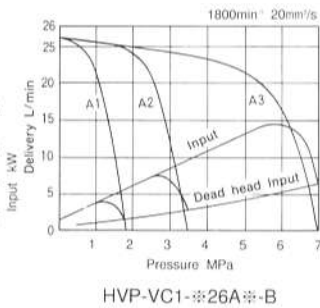
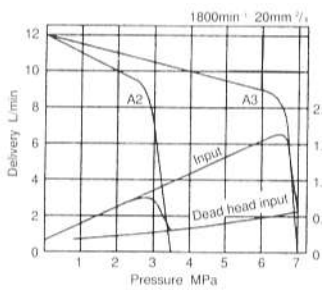
- Design No.
- Vane pump
- Variable displacement
- Series designation
- Rated pressure 1: 7MPa, 1,000 psi
- Mounting G: Gasket type
F: Flange type
L: Foot type
- No Load delivery (ℓ /min)
- Delivery characteristic A: sharp cut
- Pressure adjusting range
 - 1: 0.8 ~ 1.8MPa
114 ~ 257 psi
 - 2: 1.4 ~ 3.5MPa
200 ~ 500 psi
 - 3: 3 ~ 7MPa
428 ~ 1,000 psi

● Specifications

(oil viscosity : 20 mm²/s)

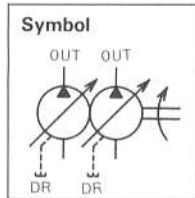
Model	Max. Pressure		Delivery under no load				Pressure adjusting range		Speed min ⁻¹		
	MPa	psi	at 1,200 min ⁻¹		at 1,800 min ⁻¹		kgf/cm ²	psi	Rated	Max.	Min.
			ℓ /min	gpm	ℓ /min	gpm					
HVP-VB1-F12A2-B	7	1,000	8	2.1	12	3.2	0.8 ~ 3.5	200 ~ 500	1,800	1,800	720
HVP-VB1-F12A3-B							3 ~ 7	428 ~ 1,000			
HVP-VC1-※26A1-B	7	1,000	17	4.5	26	6.9	0.8 ~ 1.8	114 ~ 257	1,800	1,800	750
HVP-VC1-※26A2-B							1.4 ~ 3.5	200 ~ 500			
HVP-VC1-※26A3-B							3 ~ 7	428 ~ 1,000			
HVP-VD1-※45A1-B	7	1,000	30	7.9	45	11.9	0.8 ~ 1.8	114 ~ 257	1,800	1,800	750
HVP-VD1-※45A2-B							1.4 ~ 3.5	200 ~ 500			
HVP-VD1-L 45A3-B							3 ~ 7	428 ~ 1,000			
HVP-VF1-L 56A1-B	7	1,000	56	14.8	—	—	0.8 ~ 1.8	114 ~ 257	1,200	1,200	750
HVP-VF1-L 56A2-B							1.4 ~ 3.5	200 ~ 500			
HVP-VF1-L 56A3-B							3 ~ 7	428 ~ 1,000			
HVP-VF1-L 90A1-B							0.8 ~ 1.8	114 ~ 257			
HVP-VF1-L 90A2-B							1.4 ~ 3.5	200 ~ 500			
HVP-VF1-L 90A3-B							3 ~ 7	428 ~ 1,000			
HVP-VF1-L120A1-B	3.5	500	120	31.7	—	—	0.8 ~ 1.8	114 ~ 257	1,200	1,200	750
HVP-VF1-L120A2-B							1.4 ~ 3.5	200 ~ 500			
HVP-VG1-G125A2-B	7	1,000	125	31.7	—	—	1.4 ~ 3.5	200 ~ 500	1,200	1,200	600
HVP-VG1-G125A3-B							3 ~ 7	428 ~ 1,000			
HVP-VG1-G160A2-B							1.4 ~ 3.5	200 ~ 500			
HVP-VG1-G160A3-B							3 ~ 7	428 ~ 1,000			

● Performance curves

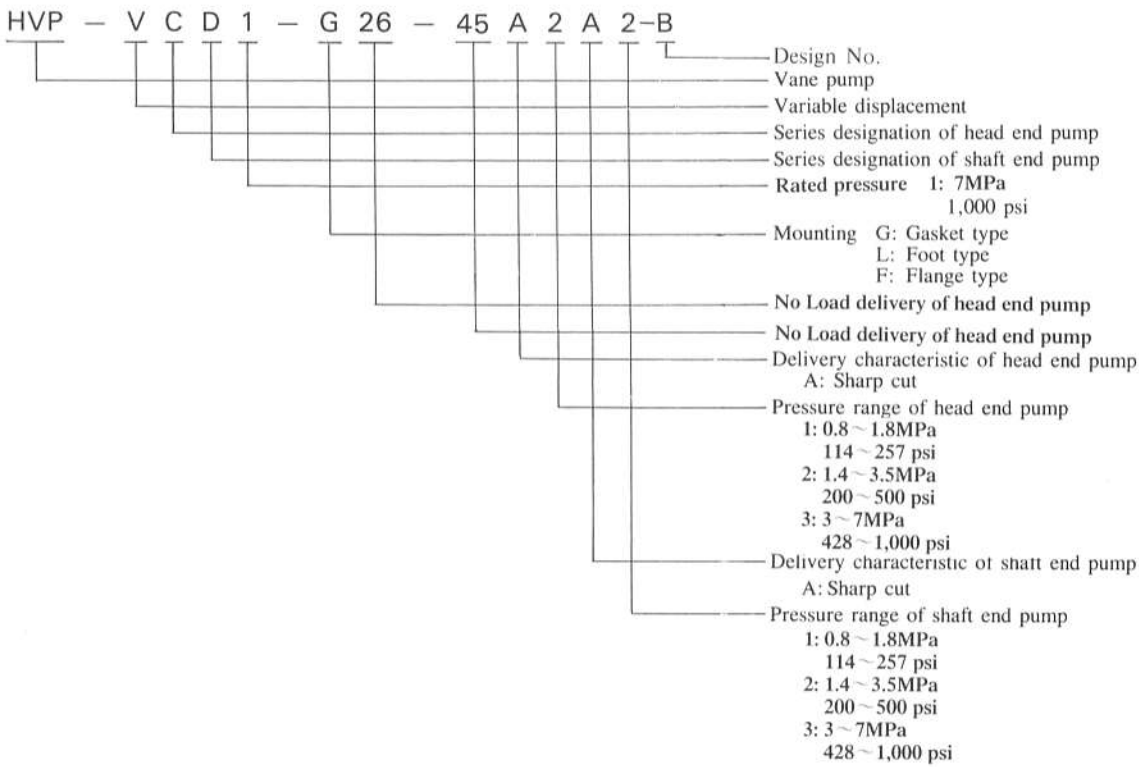


Series HVP-V※※1

Two single pumps are united in a unit, driven by a single shaft. Fluid from two pumps can be delivered separately to two circuits or delivered together to obtain a larger displacement.



● Model coding



● Specifications

Model	Rated pressure		Delivery under no load				Speed min ⁻¹	
	MPa	psi	Head end pump		Shaft end pump		Max.	Max.
			ℓ /min	gpm	ℓ /min	gpm		
HVP-VCC1-※26-26A-B	7	1,000	26	6.9	26	6.9	1,800	750
HVP-VCD1-※26-45A※-B			26	6.9	45	11.8		
HVP-VCF1-L26-56A※-B	7	1,000	17	4.5	56	14.8	1,200	750
HVP-VCF1-L26-90A※-B			17	4.5	90	23.8		
HVP-VCF1-L26-120A※-B	7(3.5)	1,000	17	4.5	120	31.7		
HVP-VDD1-※45-45A※-B	7	1,000	45	11.8	45	11.8	1,800	750
HVP-VDF1-L45-56A※-B	7	1,000	30	7.9	56	14.8	1,200	750
HVP-VDF1-L45-90A※-B					90	23.8		
HVP-VDF1-L45-120A※-B					120	31.7		

(Note) For the specifications of the pump, please refer to the relevant single pump.
The value in () represents max. operating pressure of shaft end pump.